

# COMPANY OVERVIEW

**mott**  
MISSION CRITICAL PRECISION

## 65 YEARS OF EXPERTISE

- Largest install base of porous metal components in the world
- High precision filtration and flow control devices
- Most extensive customization services in the industry
- World-class lab center to assist in product/process design
- Innovative capabilities, such as 3D printed porous metal



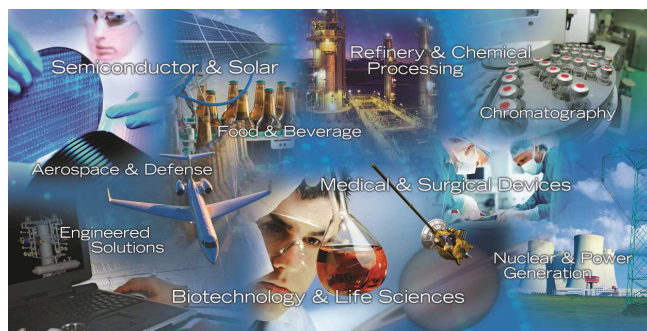
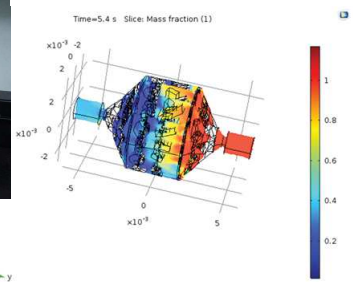
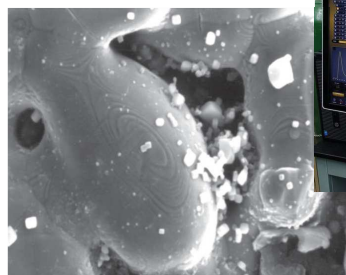
## PRODUCTS

- Process filtration systems & elements
- High purity filters
- OEM gas and liquid filters
- Chromatography components
- 3D printed components
- Spargers
- Flow restrictors
- Gas diffusers
- Flame arrestors
- And many more



## SERVICES AND LAB SUPPORT

- Design services
- CFD analysis
- Rapid prototyping
- Full service lab
- Training and consulting



## INDUSTRIES WE SERVE

- Microelectronics
- Chemical Processing
- Analytical Instrumentation
- Oil & Gas
- Aerospace & Defense
- Food & Beverage
- Pharma & Biotech
- Industrial Manufacturing
- Medical
- And Others