

MOTT HYPULSE® HYLINE FILTERS

mott
MISSION CRITICAL PRECISION

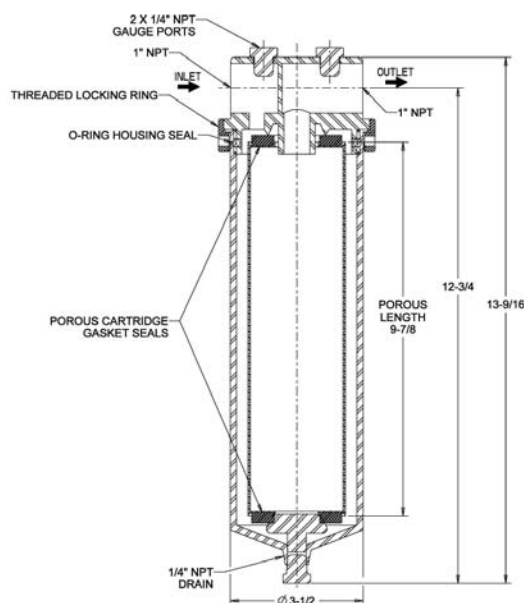
SERIES 7710 HYPULSE® HYLINE

DESCRIPTION

The 7710 Series HyPulse HyLine Filters provide reliable filtration for separating solids from liquids or gases. These filters have 316L stainless steel housings and come standard with a Buna N housing seal to provide strength and dependability. Elements have a double open ended connection configuration.

EQUIPMENT SPECIFICATIONS

- 316L SS Porous Metal Media
- 316L SS Housing and Hardware
- Maximum Operating Pressure: 300 psi (Housing)
- Housing for 10" Double Open Ended Cartridges
- Temperature Rating Based on O-Ring Selection (see below)
- 1" NPT Inlet / Outlet Housing Ports
- 1/4" NPT Housing Drain
- Outside-In Filter Area: 0.54 Ft²
- Filter Element 100% Leak Tested to Bubble Point



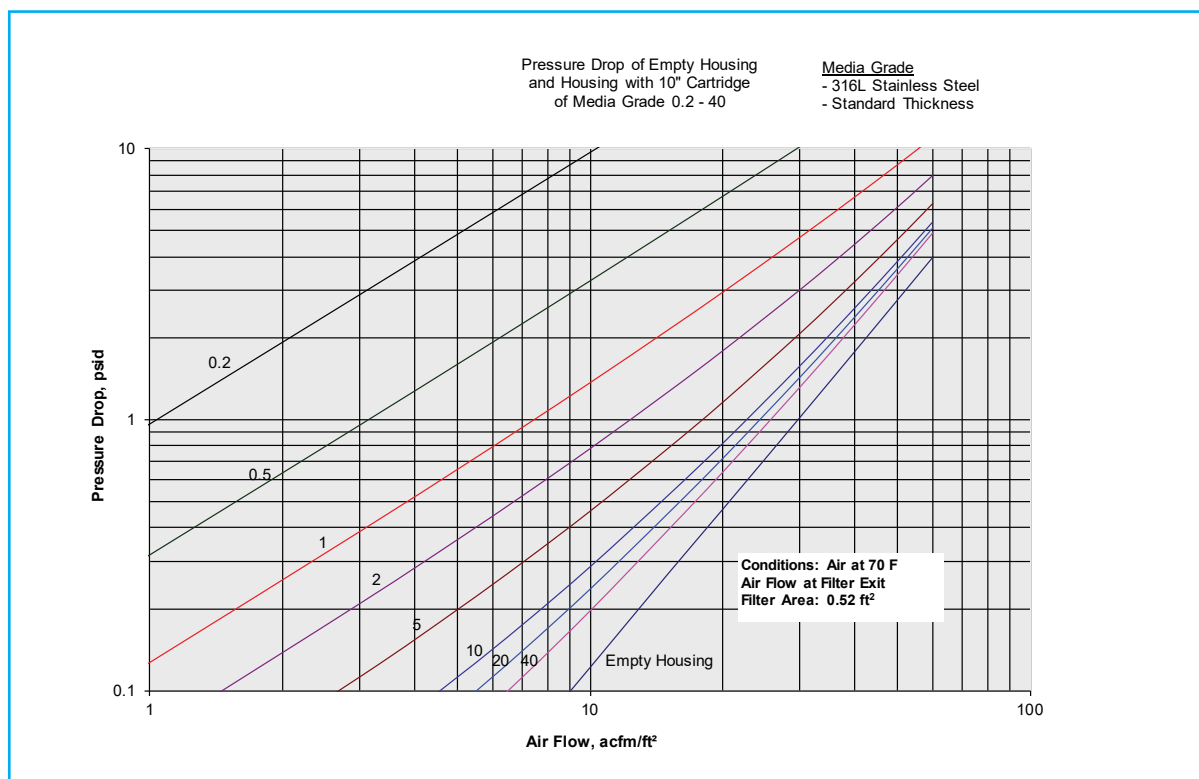
APPLICATIONS

- Liquids / Steam / Gas
- Process Filter
- Sampling Filter
- Polishing Filter
- Pilot or test filtration (feasibility, filterability, flow vs delta P, efficiency, backwash capability, cake characterization, cake-holding capacity, precoat performance)

HOUSING O-RING INFO

| O-Ring Material | Operating Temp Range °F | Operating Temp Range °C | Note |
|-------------------------|-------------------------|-------------------------|--|
| -B (Buna N) Standard | -30° to 250° | -34° to 121° | Temperature ranges may vary depending upon application dynamics, variables, and chemical properties. For higher temperatures, consult factory. |
| - E (EPDM) | -40° to 300° | -40° to 149° | |
| - S (Silicone) | -60° to 400° | -51° to 204° | |
| - V (Viton A) | -10° to 400° | -23° to 204° | |
| | | | |

FLOW DATA



ORDERING INFORMATION

| Item Number | Description | Note |
|--|--|--|
| 101055 | 7710-DOE-10-AF-66 (Housing for DOE Cartridge) | Spare cartridges, housing o-rings, and cartridge gaskets are available upon request. |
| 2107001-XXX | 7710-41-DOE-10-XXX-AB (2 9/16" OD, DOE, Gasket Seal Connection, 10" Lg Element) | |
| XXX = Choose Media Grade: 0.5, 2, 5, 10, 20, 40 (all other media grades - consult factory) | | |

HyPulse is a registered trademark of Mott Corporation